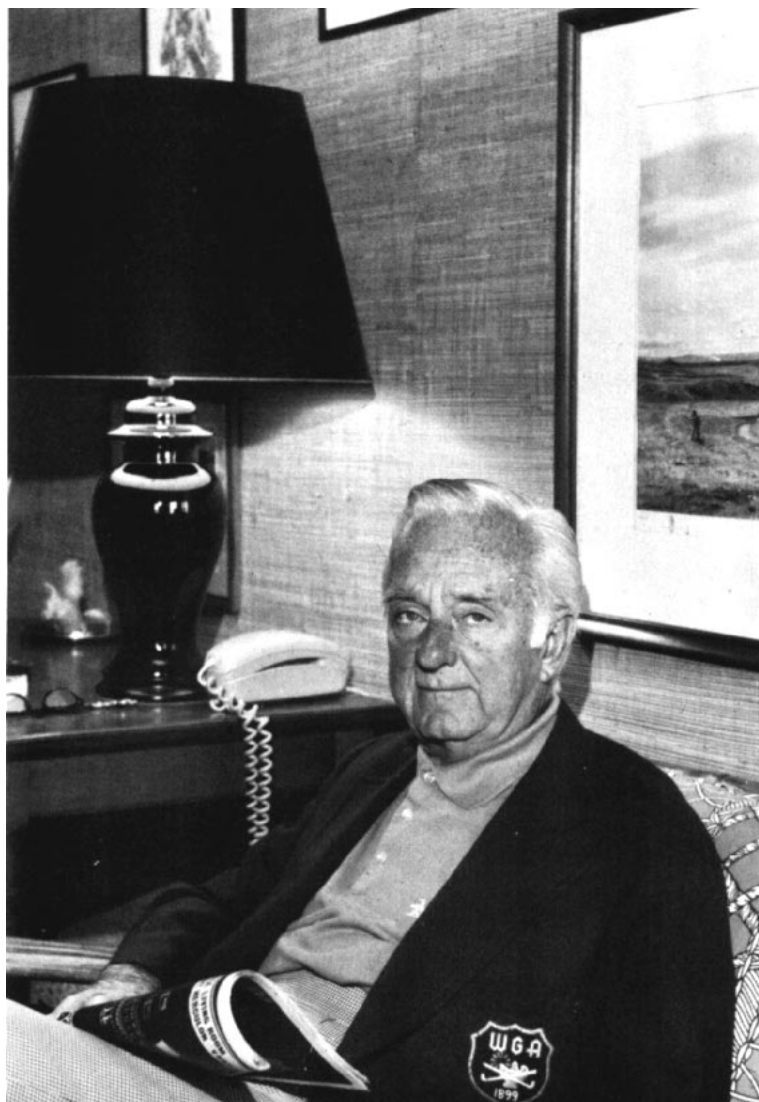




**B. HOLLY BROADBENT**  
1894-1977



F. COPELAND SHELLEN  
1907-1977

# In Memoriam

B. HOLLY BROADBENT, D.D.S.

1894-1977

A long-time member of the Angle Society, Dr. Broadbent died on December 22, 1977 after several years of failing health. His passing marks the end of an era when orthodontic research in growth studies was sparked by his development of roentgenographic cephalometry at Western Reserve University (now Case Western Reserve University).

This new technique became a vital research tool when the late Mrs. Chester Bolton proffered the monies to establish the Bolton Study to pursue dentofacial X-ray studies of healthy children from birth to adulthood. The ultimate result consisted of 22,800 recordings of 5400 children over a period of thirty-six years, numerous appearances by Dr. Broadbent on dental programs in this country and abroad, and the publication in 1975 of *Bolton Standards of Dentofacial Developmental Growth*.

Dr. Broadbent was born in Lockport, New York in 1894. His public school education was received in Washington, D.C. and Warren, Pennsylvania. In 1919 he received the D.D.S. degree from Western Reserve University. After several years in two private orthodontic offices in Cleveland, he was graduated in 1923 from the Angle School of Orthodontia in Pasadena. The remaining years were spent in private practice in Cleveland, where he also pursued his research activities and taught at Western Reserve University Dental School as Director of Research, Bolton Study, and Professor and Head of the Department of Dentofacial Morphology.

He was a visiting lecturer in orthodontics and honorary alumnus at the University of Illinois, Northwestern University, University of Pennsylvania Graduate School of Medicine and Wal-

ter Reed Army Medical Center Graduate School of Dentistry.

Numerous awards and honors were bestowed upon Dr. Broadbent including: Fellow, American College of Dentists, Ketcham Award from the American Board of Orthodontics, Centennial Award of Northwestern University and the Callahan Medal, Ohio State Dental Society. Honorary degrees were received from the Royal Faculty of Physicians and Surgeons, University of Glasgow, Trinity College, University of Dublin and Case Western Reserve University. He was an Honorary Fellow in Dental Surgery, Royal College of Surgeons, London, and was given distinguished service awards by the Great Lakes Society of Orthodontists and Western Reserve University School of Dentistry.

There were numerous other activities: member of the White House Conference on Child Health and Protection in 1930, Trustee of the Allen Memorial Library of the Cleveland Medical Library Association (1940-1955) and the Board of Directors of the Cleveland Health Museum.

He held membership in the usual dental and orthodontic societies, as well as in the International Dental Federation, the Eastern Association of Angle Graduates, the International Association of Dental Research, and was a Fellow of the American Association for the Advancement of Science. He was also a member of Psi Omega, Sigma Xi and Omicron Kappa Upsilon.

Dr. Broadbent enjoyed several hobbies. He became a member of the Boy Scouts of America in 1911 and later a member and president of the Executive Board of the Greater Cleveland Council of the Boy Scouts. This lifelong service to Scouting was saluted in 1932

with the Silver Beaver Award for Distinguished Service to Boyhood. The lapel pin was worn with pride in all the years that followed.

Another activity was photography. He owned a number of cameras and frequently used them both for his family's pleasure and to entertain his friends. Few of his fellow Angle members will forget the movies he showed and narrated at a biennial meeting of the Angle Society. The title was "Early Years of the Angle School"; it covered the year Dr. Broadbent was at the Angle School in Pasadena (1922-23), as well as a reunion meeting of Angle graduates in New London, Connecticut which marked the formal introduction of the edgewise appliance in the late 1920's.

A third avocation was model rail-

roading. Over the years he assembled a truly magnificent model railroad in the basement of his home. It featured hundreds of feet of trackage, sophisticated electrical controls and a number of cars he had built.

Dr. Broadbent's wife, Bernice M., preceded him in death in 1965. Survivors include a son, Dr. B. Holly, Jr., a Cleveland orthodontist, and three daughters: Ann Holden, Jane Prutton and Frances Philbrick. Fourteen grandchildren also survive.

Memorial services were held at Amasa Stone Chapel on the campus of Case Western Reserve University on January 18, 1978. Presiding was his son-in-law, the Reverend Robert J. Holden, Associate Dean for Student Affairs at M.I.T.

M.R.N.

#### F. COPELAND SHELLEN 1907-1977

On December 19, 1977, Cope Shelden passed away after a lengthy illness. He was dedicated to dentistry and orthodontics, and respected by all.

He was born in Kansas City and spent his entire life in that community. His education was attained at Wentworth Military Academy, University of Missouri and its dental school.

One of the interesting things in Cope's orthodontic education was the fact that he was a student of Dr. Angle's in Pasadena before he was graduated from dental school. His father, Dr. Frank Shelden, a pioneer in Missouri orthodontics and one of Dr. Angle's early students, heard in 1929 that Dr. Angle was to have his last class. He persuaded him to take young Cope as a student even though his dental education was not completed. Cope was also

accorded the privilege of living with the Angles during his stay in Pasadena. He then returned to dental school, was graduated in 1931 and started his orthodontic career in Kansas City.

In orthodontics he was a member of all local, state and national societies. He was a charter member and past president of the Midwestern Component of the Edward H. Angle Society as well as the Charles H. Tweed Foundation. He was a diplomate of the American Board of Orthodontics, member of the Missouri Board of Dental Examiners from 1958 to 1967, and on the active staff of Children's Mercy Hospital in Kansas City for twelve years. Upon retirement Cope was appointed to the honorary board of the hospital.

He not only furthered his education

by belonging to these various associations but also was actively involved with teaching orthodontics, for many years being on the staffs of the Graduate Orthodontic Departments of Tufts College, St. Louis University, University of Missouri, Kansas City, and Detroit University. He had a number of original articles published in professional journals.

Cope had a great love for the game of golf. This led him into the Board of Directors of the Western Golf Association whose main purpose is supplying college scholarships for deserving cad-

dies. He was the main force behind founding Evans Scholars chapters at the University of Missouri in 1967 and the University of Kansas in 1975. His golfing interests were directed toward aid for young golfers.

He will be missed by all who knew him, family, friends, patients and dental colleagues.

Surviving are his wife Elizabeth, daughter Dee Dee Shelden Arnold, mother Mrs. Frank Shelden, sister Mrs. Charles Kelley, and brother Dr. Russell Shelden, all of Kansas City.

R.L.F.