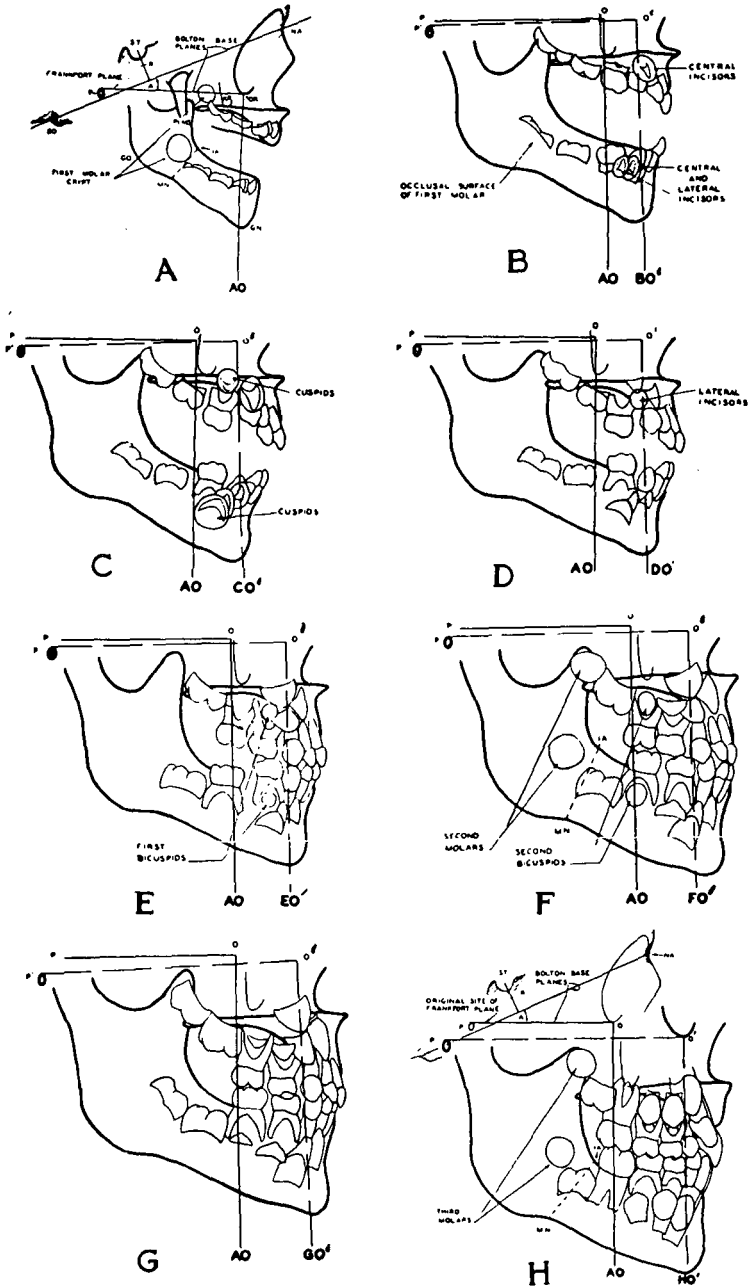
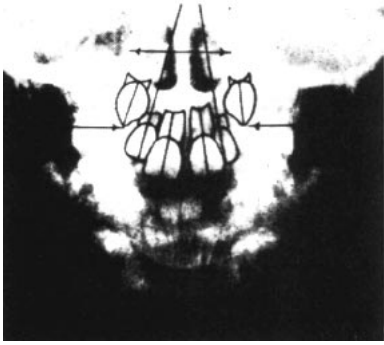


DEVELOPING DENTAL PATTERNS



Profile dental patterns in relation to the supporting structures. From B. Holly Broadbent, *The Face of the Normal Child*, THE ANGLE ORTHODONTIST, 7, page 203, October, 1937.

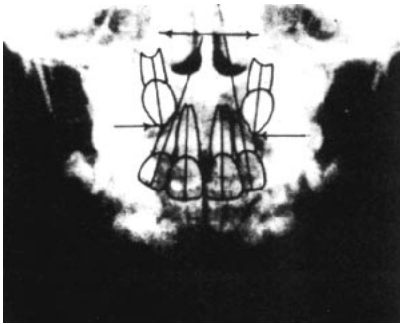
A Cephalometric Classic



6 YRS. 5 MO.



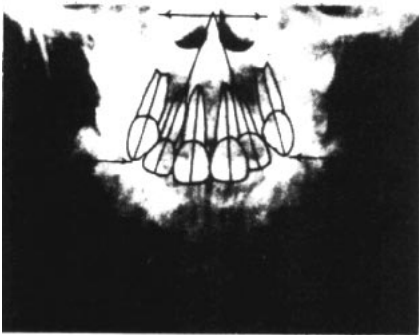
8 YRS. 1 MO.



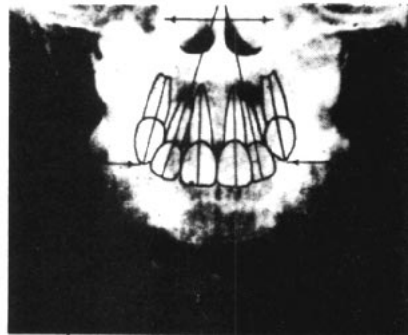
9 YRS. 0 MO.



10 YRS. 0 MO.



11 YRS. 0 MO.



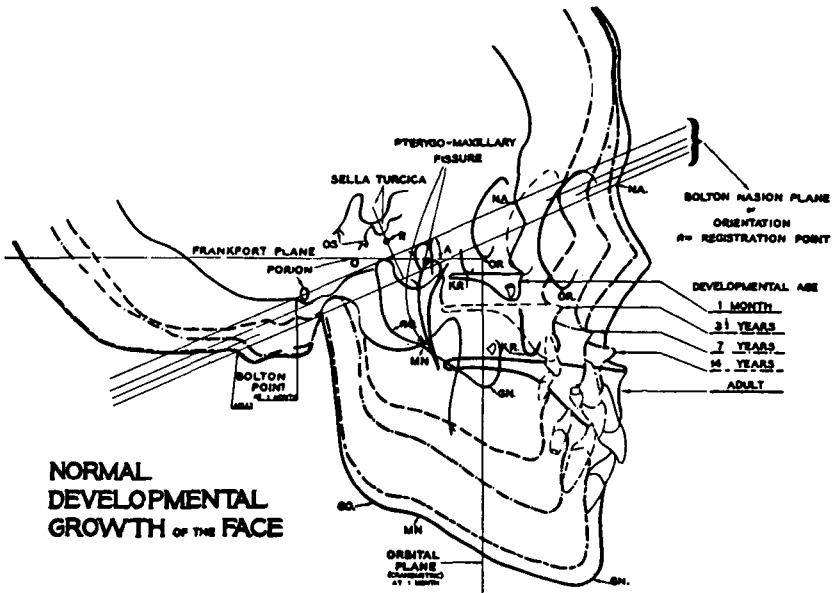
12 YRS. 0 MO.

DEVELOPING DENTAL PATTERNS

* AN "UGLY DUCKLING" STAGE

Frontal radiographs of a single individual, showing changes in inclination and paths of eruption of incisors and cuspids. From B. Holly Broadbent, *The Face of the Normal Child*, THE ANGLE ORTHODONTIST, 7, page 205, October, 1937.

A Cephalometric Classic



Normal developmental growth of the face from the Bolton Study records. A—Angle of Frankfort plane of the first record to the Bolton-Nasion plane of orientation. GN—Gnathion. GO—Gonion. KR—Key Ridge. NA—Nasion. OR—Orbitale. OS—Occipito-sphenoidal suture. MN—Mandibular notch.

from B. Holly Broadbent, *The Face of the Normal Child*, THE ANGLE ORTHODONTIST, 7, page 198, October, 1937.