

DR. GEORGE A. DINHAM

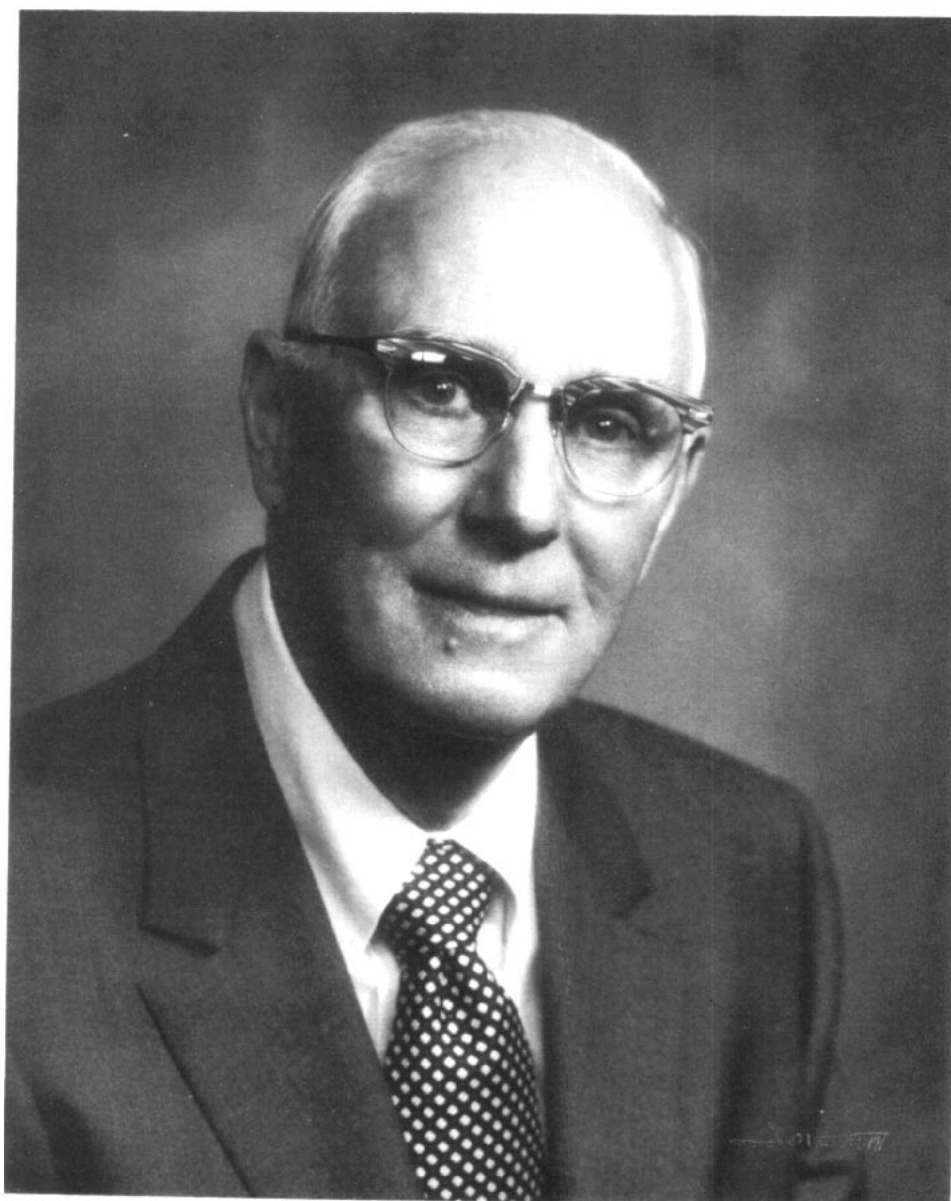
George Dinham was born in Duluth, Minnesota on October 25, 1904. A dedicated orthodontist, student and teacher all his life, he was still hard at work less than a week before his death on January 17, 1983. He had already completed the paper that he was scheduled to present to the Midwestern component of the Angle Society a month later, and that paper will appear soon in *THE ANGLE ORTHODONTIST*.

His education carried him away from Duluth for a few years; first to the University of Minnesota for his D.D.S. degree, and then after about a year of general practice on west to Seattle. There he studied in the office of his brother Dr. William Dinham and Dr. Paul Lewis, both graduates of the Angle School. He returned to Duluth in 1931, and continued to practice orthodontics there for over fifty years.

Always a student, George was an early Diplomate of the American Board of Orthodontics. He studied and later taught in the Charles H. Tweed Edgewise course. The work of P. R. Begg in Australia so piqued his interest that he traveled there to study first-hand in Dr. Begg's office, and he later became an honorary member of the Begg Society.

In recent years he concentrated on the challenging interrelationships of occlusion, musculature and the temporomandibular joints.

Beyond orthodontics, he contributed his time and skills to service on the Minnesota Board of Dental Examiners and for an even longer period as Adjunct Professor on the faculty of the Minnesota-Duluth Dental Hygiene program, where a scholarship fund has been established in his memory.



GEORGE A. DINHAM

1904-1983